



Portable Colour
Doppler Ultrasound

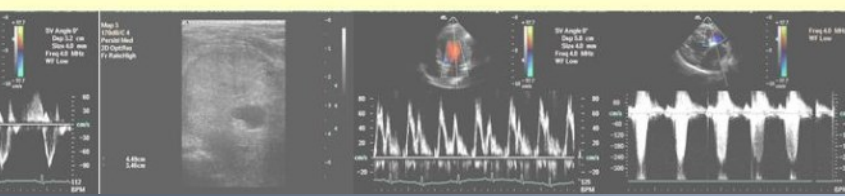
New

CHISON Q5

Ultrasound packages

Tailored to suit your needs

The **CHISON Q5** is an exciting new digital portable scanner offering a wide range of imaging modes making it ideally suited for use in the ward and in general practice. Configured with application presets, combined with a large 15 inch medical grade LCD monitor and a powerful, flexible archiving system, the CHISON Q5 brings unparalleled ease of use and image quality giving advanced benefits in all imaging modes, allowing a fast, accurate diagnosis



- Linear Array Probes
- Convex Array Probes
- Phased Array Probes
- Microconvex Array Probes
- Speciality Probes

CHISON Q5 Applications

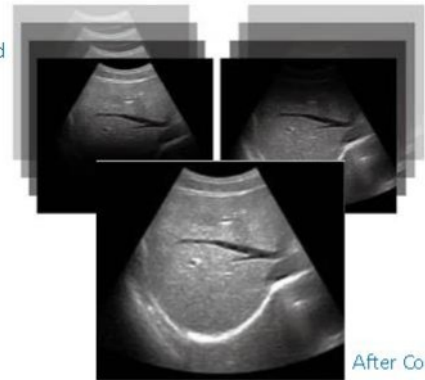


Advanced Technologies

Compound Imaging

Traditional compound imaging technologies improve the image quality, but reduce the frame rate of the images being sampled, affecting diagnosis and efficiency. The Q5 compound imaging has integrated multiple key factors but will not sacrifice the frame rate.

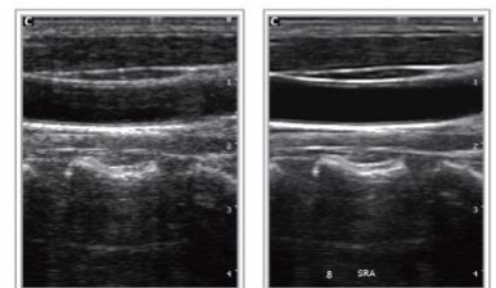
Before
Compound



After Compound

Speckle Reduction Algorithm

SRA is a technology that uses a variety of noise reducing algorithms to suppress speckle in the image, smooth the tissue and increase the clarity of edges, giving a clearer image and the ability of make a more accurate diagnosis.



Compact in size Powerful inside



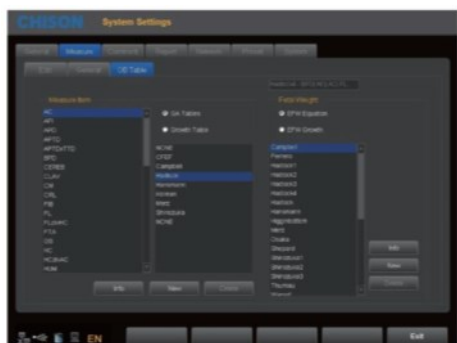
The Chison Q5 delivers superb image quality in a wide range of applications including abdomen, OB/GYN, small parts, urology and MSK. Combining advanced technologies such as Compound Imaging, Speckle Reduction, Tissue Harmonic Imaging and Intelligent image, the scanner provides better contrast resolution, which greatly helps the diagnosis of difficult to scan patients

A work-flow oriented user interface has been designed to allow user friendly operation with minimum soft key entries. Using a range of application presets to make system set up straightforward, combined with a large 15inch LCD monitor, twin probe connectors, USB and DICOM connectivity allow you to concentrate on the patient and make a fast and accurate diagnosis.



Streamlined Workflow

- Wide range of application presets
- User definable presets
- Comprehensive measurement & Report package
- EasyView Image archive system
- Quick image store, retrieve and transfer
- USB & DICOM* export



Built-in Report system

Multiple Fetal growth report and fetal growth curve graphs are included in the obstetrics report package

Measurement Work Sheet

ID	NAME	SEX	DOB	AGE	HEART RATE
01	Jenny	F	JAN-13-1984	25	110

FETAL BIOMETRY		VALUE 1	VALUE 2	MEAN	UA	REF
SPD		27.85		27.85	174x50	Head size
AC		114.42		114.42	174x12	Head size
FL		23.71		23.71	174x12	Head size

GROWTH	PERCENTLS	REF	GROWTH	PERCENTLS	REF
FL	Over Limits	FLAC	FLAC	Over Limits	Normal
AC	Over Limits	FLAC	FLAC	Over Limits	Normal

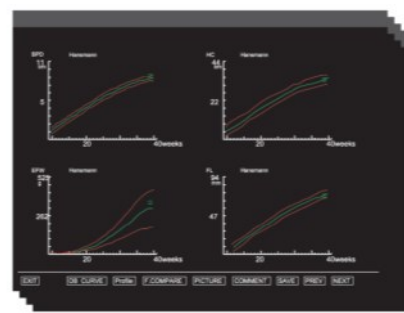


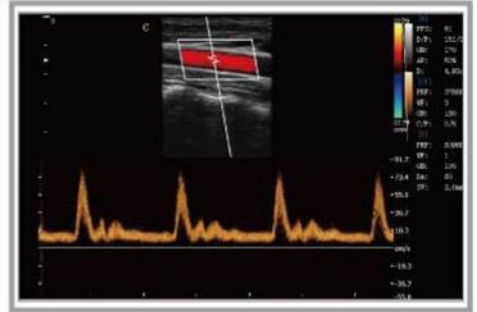
Image Gallery



Fetus, 18 weeks



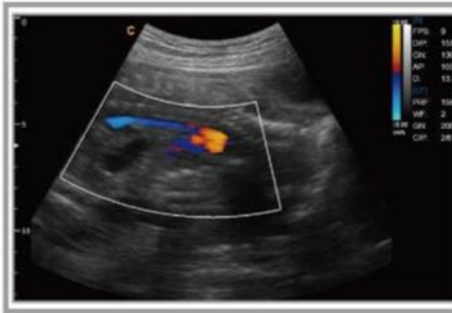
Fetal face, 26 weeks



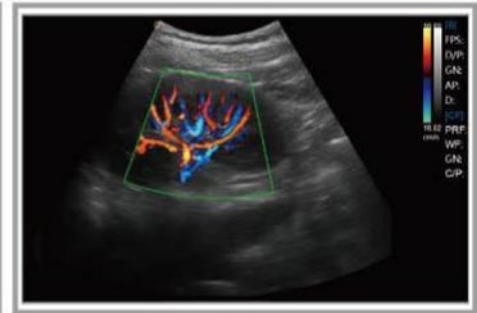
Carotid artery, D mode



Follicles scan after therapy



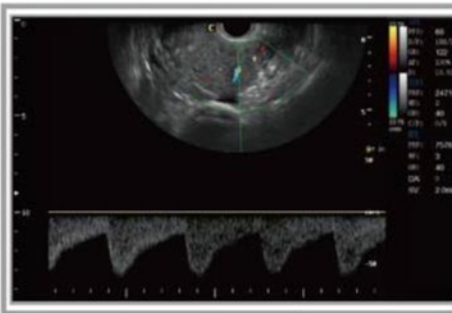
Aorta of fetus, CFM mode



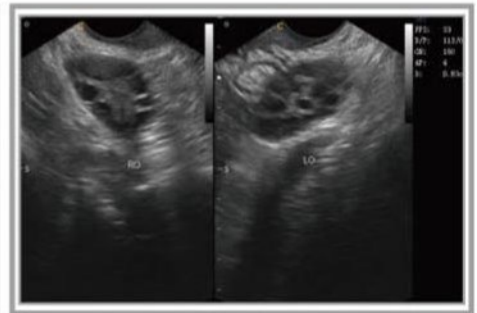
Kidney, C mode



Fetal spine, B mode



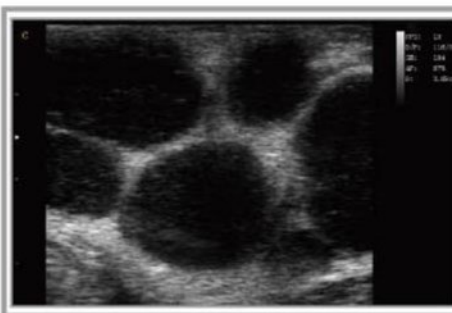
Hysteromyoma, D mode



Polycystic ovary syndrome



Fetal profile, B mode



Lymphoma, B mode



Uterus, C mode



System specifications

Imaging Modes

- B,2B,4B, B/m, M
- CFM
- Pulsed Wave Doppler
- Power Doppler/Directional Power Doppler
- Duplex Imaging
- Trapezoidal
- Real Time 4D (option)
- Chroma B/Pulsed Wave

Probes

- All probes are broadband multifrequency
- 3.5MHz Convex Probe
- 7.5MHz Linear Probe
- 6.0MHz TransvaginalProbe
- 4.0MHz 4D Volume Imaging Probe
- 7.0MHz Transvaginal Probe (180 degree)
- 5.0MHz Pediatric Probe
- 3.0MHz Microconvex Probe
- 3.0MHz Phased Array Probe

Image Processing Technology

- THI on convex probe
- Speckle Reduction Algorithm (SRA)
- Compound imaging technology
- i-image: image optimisation software

Measurements & Report Packages

- Obs & Gynae
- Vascular
- Urology
- Small Parts
- Basic Cardiac

Professional Clinical Applications

- Abdominal
- Obstetrics
- Gynecology
- Vascular
- Pediatric
- Urology
- Musculoskeletal
- Small Parts

Standard Configuration

- Main Unit
- 15" LCD Screen
- 2 probe connectors
- 320GB Hard Disk
- 2 USB Ports
- Video out, TV out, LAN Port, VGA out

Options

- 3.5MHz Convex Probe
- 7.5MHz Linear Probe
- 6.0MHz TransvaginalProbe
- 7.0MHz Transvaginal Probe (180 degree)
- 5.0MHz Pediatric Probe
- 3.0MHz Microconvex Probe
- 3.0MHz Phased Array Probe
- 4D package: including 4.0MHz 4D Volume Probe, 4D software and 4D hardware module
- Video Printer
- PC Printer
- DICOM 3.0
- Biopsy kit for convex, linear and TV probes
- Foot Switch



MIUS - 'When Quality Counts'



12 month warranty on system
12 Month warranty on probes

Available Options:

- DICOM 3.0
- 3D/4D Imaging (Probe & Software)
- Biopsy Kits
- Custom Designed Trolley
- Printers
- Foot switch
- Travel Case for scanner & Probes



CHISON Q5 Applications

NEW Q5 Black and White option

The Q5 Scanner is also available as a black and white system. The specification of the black and white Q5 includes

B Mode Imaging with high frame rates
M Mode Imaging with variable sweep speed
Compound Imaging
Trapezoidal Imaging
Speckle Reduction Algorithm
Tissue Harmonic Imaging

I-image: image optimisation software
Measurement and Report packages
Cine Loop review, frame by frame or loop
Dual Probe Connectors
USB and on board archiving in PC Format
320 GB Hard disk and 2 USB ports

Contact MIUS today to discuss your specific requirements, we can help tailor a package to suit your needs now and as you develop your skills.

The Chison Q5 scanner comes with:

Application training at our Gloucester office
12 months back to base warranty on system
12 Months back to base warranty on probes

