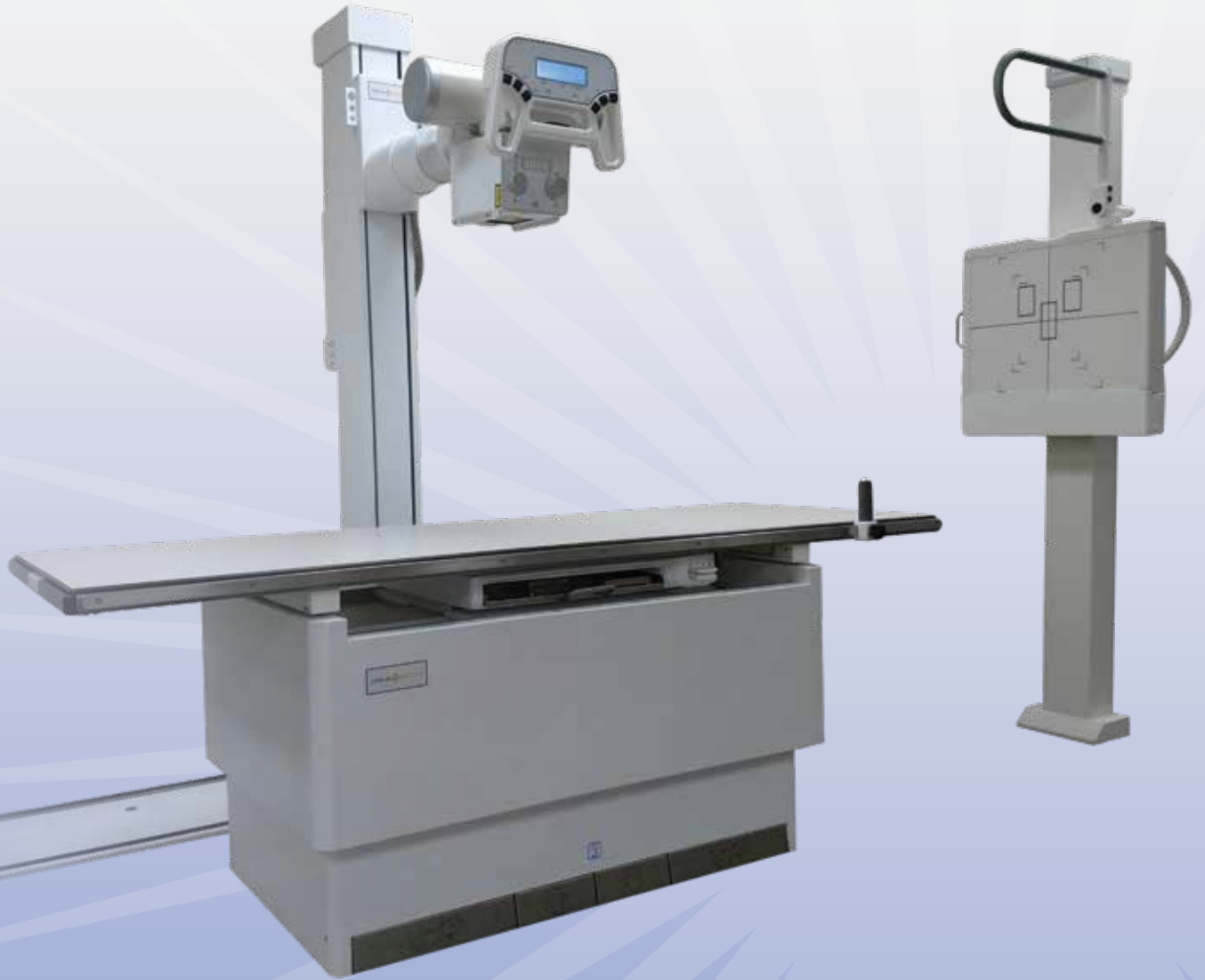


AMRAD MEDICAL



DFMT | FMT

Premier Radiographic Systems

www.AmRadMedical.com

Features & Benefits



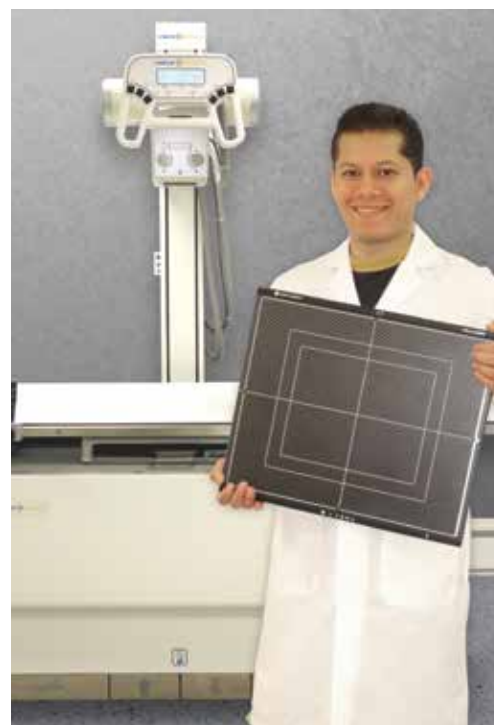
DFMT



Fast and Accurate Patient Positioning

Digital Floor Mounted Tubestand

- Easy to read LCD shows SID continuous to table-top and table receptor with discrete SID of 40" and 72" to the wallstand
- Cross-table views are easily accomplished using the rotational and transverse positioning capabilities
- 10 ft. floor track allows for off-table and weight bearing exams and is customizable down to 8 ft.



Compatible with most DR Solutions



Easy Patient Transfer



Convenient Lock-Release Pedals



Standing Knees



Ergonomic Design

Elevating Four-way Float Top Table

- Flat, four-way, floating top permits easy transfer and positioning of patients
- Designed for all types of applications, available in 400lb and 650lb patient capacities
- Four-pedal design allows for easy accessibility to table lock release
- Collision-protection and fail-safe locks ensure safe operation
- Four-way lock release and elevation handle (DFMT)

Options include:

- 35.5" wide table top
- Four-way lock release handle
- Non-elevating version available in 400 lb and 650 lb patient capacities
- Rotating Cassette Tray

Wallstand

- Center mounting or side mounting of Bucky makes this wallstand flexible for any patient application or installation limitation
- Ergonomically designed hand control for ease of positioning wall receptor
- Side-mounted handgrips stabilize patients during PA exams
- Overhead Grip (DFMT)
- Remote Collimator Light

Options include:

- Dual-sided Lock Release
- Rotating Cassette Tray



35.5" Wide Table Top



Economical Alternative FMT



Table Lock Release Handle with Elevation (FMT, optional)

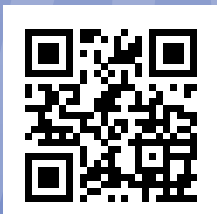


Overhead Grip for J1000 Wallstand (FMT, optional)

System Options (L to R, above)

The AmRad™ Medical DFMT and FMT Systems can be configured to meet the needs of any department. Options include, but are not limited to:

- An extra-wide table top for the S222 elevating table to help patients feel more secure
- Four-way lock release and elevation handle for easy patient positioning can be located anywhere on the rails of the S223 non-elevating or S222 elevating tables (DFMT, standard; FMT, optional)
- The FMT is an economical alternative to the DFMT with the same versatility and functionality as the DFMT
- Patient Overhead Grip for use with the J1000 wallstand helps steady patients for upright exams (DFMT, standard; FMT, optional)



7555 N. Caldwell Avenue
Niles, Illinois 60714

Phone: 773-353-4000
Fax: 773-588-3424
Toll Free: 1-800-729-9729



www.AmRadMedical.com



SAI GLOBAL
ISO 13485
Quality